



VENUE

Rockefeller Music Hall
Badstugata 2
N-0183, Oslo
Norway

(+47) 22 20 32 32 (switchboard phone nr.)
www.rockefeller.no
post@rockefeller.no



VENUE DETAILS

Dressing rooms: 5 rooms
Shower: 2, close to dressing rooms
WiFi and hard line: Yes
Bus + truck parking: On req.
Bus power: Yes
Load in: Truck access to street, steep ramp to stage level

Prod. offices/promoter office rooms: 1
Catering area: On request.
Barricades: Aluminium mojo style
Merchandise: Designated area

Note:

Please contact the promoter or venue representative to arrange for parking and other specific matters in advance.

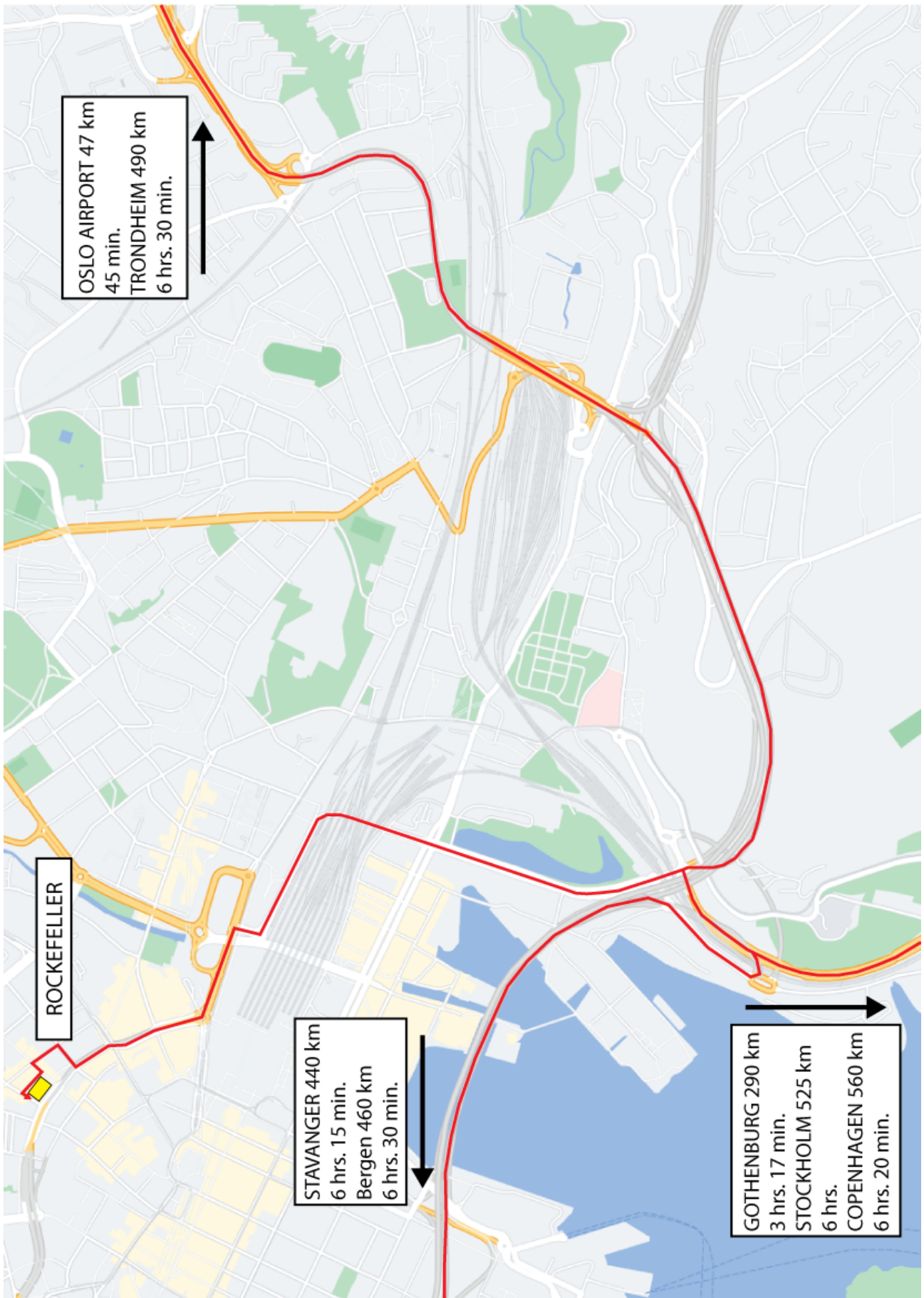
Main venue/production contact

Jan Sheikh
+47 93 88 33 48 / +47 22 03 48 17
jan@rockefeller.no

TABLE OF CONTENTS

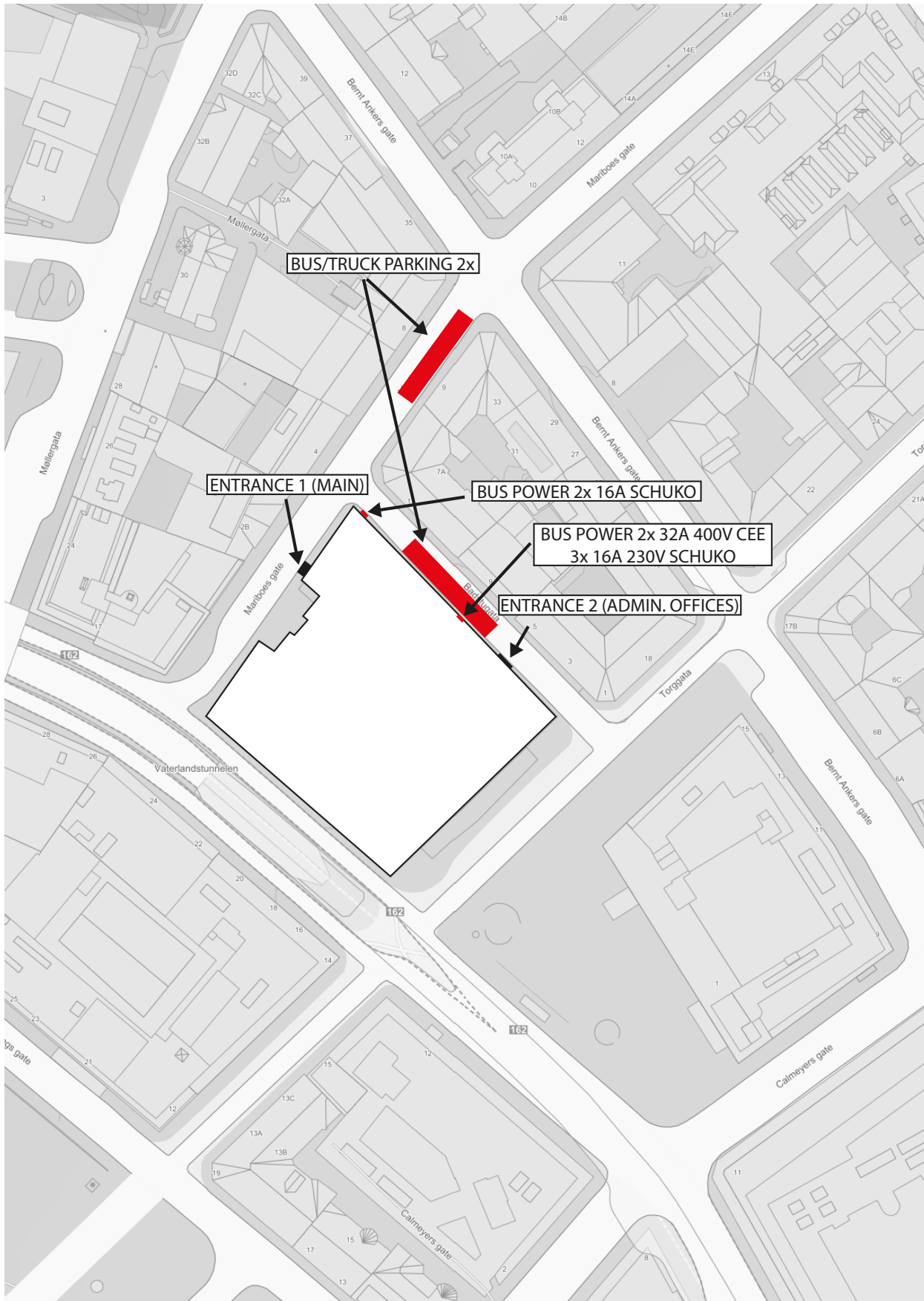
1. Map with directions
2. Drawing with directions and parking
3. Information
4. Stage level (2nd floor) / stage, dressing rooms and prod. office
5. 1st. balcony level (3rd floor)
6. 2nd. balcony level (4th floor)
7. Stage level (2nd floor) / dressing rooms and prod. office
8. Dressing rooms (2nd floor)
9. Rigging
10. Pictures stage level (2nd floor) / Dressing rooms and prod. office

1. MAP WITH DIRECTIONS



2. DRAWING WITH DIRECTION AND PARKING

GPS coordinates: 59.916245, 10.750240



3. INFORMATION

Venue type	Club with balcony, standing audience on all floors. Originally a public bath, the hall was converted to a concert venue in 1986.
Venue tour:	Video coming soon.
Capacity	1300 standing
Number of entrances	2 entrances. Entrance #1 used for GA and seated shows, as well as load in/load out. Entrance #2 is for office entrance/backstage only.
Fire doors/gates	Doors and gate openings cannot be blocked or run through (with cables etc.) as these will (and must) be closed in case of a fire alarm. Also, local fire regulations do not allow for this.
Load in	Street level, up 15m steep ramp to 2nd floor, 15m push to stage. Door from street level (H x W): 2m x 2m. Lowest ceiling clearance on the ramp is 2,1m. Main entrance/load in entrance address: Mariboegate 3, 0179 Oslo.
Parking	Must be arranged minimum two weeks in advance. Subject to a fee. A parking permit will be provided on arrival. Shore power: 2 x 32A 3-phase 400V CEE (star system). 5 x 16amp 230v 1 phase Shuko. GPS Coordinates 59.916237, 10.750228. EXCESSIVE IDLING OF TRUCKS AND BUSES IS AGAINST THE LAW because of the health and environmental risks. Thank you so much for caring of the environment and our next door neighbors while visiting our venue.
Sound limit	To ensure a healthy concert experience to our audience, (and to comply with EU noise regulations towards our employees), Rockefeller is enforcing a dB limit of 102 dBA averaged over 15 minutes (Leq 15 = 102 dBA). Values will be measured at FOH, using a properly calibrated measurement system (WaveCapture). Our sound system does not have a peak limiter or circuit breaker to enforce the rule. Our house engineer or production manager, will engage in reducing the sound level if rules are not complied with. No amplified noise or soundcheck before 17:00 on weekdays due to shops and offices in the building. Saturday and Sunday; no noise before 14:00.
Stage	11m wide, 6m deep. 1,25m high (no fire curtain). Ramp is 4,8m x 1m (L x W). Max capacity 750 kg. Maximum clearance to house light rig: 6,5m downstage highest part, 5,4m upstage lowest part.

Risers	Available on request.
Curtains/ backdrop	No front curtain. Black backdrop, manually operated.
Barriers	Mojo style barriers, enough to cover stage width.
Power supply	230V Delta: 1 x 125A - 230V, 3 phases in use for in-house lights. 1 x 63 amp - 230V, 3 phases in use for in-house sound. 400V Star: 1 x 90A - Available connectors: Powerlock or 63A CEE-form (3-phase + neutral and earth). 1 x 44A - Available connectors: 63A CEE-form or 2 x 32A (3-phase + neutral and earth). Powerlock requires electrician, subject to a fee.
FOH position	9,2m from stage in front of balcony stairs, underneath the balcony, clearance 3,3m.
House PA	VUE system: 20 x VUE al-12, 4 x VUE al-12SB, 8 x VUE hs-221, 4 x VUE h-208-e , 14 x VUE V3i DSP amps. Midas Heritage HD96 and PROX and digital consoles. Full specs: http://www.rockefeller.no/specs/sound_specs_rockefeller.pdf
House lights	GrandMa 2 Light, Clay Paky Mythos, Clay Paky K10, 60 single par64, 4-Light Blinders, Atomic 3000, MDG hazer. 1 house follow spot. 52 channels dimmer system. Full specs. : http://www.rockefeller.no/specs/light_specs_rockefeller.pdf
Storage	Limited, on request. Fire aisles around the stage. No stacking of any equipment in these aisles.

Pyro and SFX

Pyro requires in house fire chief and is subject to a fee. Pyro also requires permit from the local fire department OBRE (Oslo Brann og Redningsetaten) which in turn requires a detailed risk assessment, setlist with all cues and firing order. **The permit must be in place at least two weeks before the show.** Please forward this information.

Curtains, props and other deco material need to be complaint with Norwegian standards and have low flammability (B1).
Certificates regarding the flammability must be available at all times.

The use of confetti is subject to a clean up fee and must be clarified in the advance. Minimum confetti size 55 x 17mm and must be metallic. Maximum 5kg.

Rigging

House lighting rig flown by 4 x 1000kg traveling motors.
House PA flown by 2 x 1000kg traveling motors

2 x 1250kg traveling motors available for touring productions.

Points can be made above the stage around concrete beams and a separate I-beam for touring productions.

Rigging regulations Apply to all personnel engaged in overhead technical rigging with equipment to be suspended and working in the rigging area.
Hard hats must be worn during the execution of rigging.

HSE

All subcontractors must be able to document on request to the organizer that they have HSE procedures in place.
Subcontractors must also be informed of the rules governing rigging at Rockefeller Music Hall.

Venue security

Venue security crews are split between trained house security personell and trained external professional security (ProSec).

Se our full action plan here:

https://rockefeller.no/specs/action_plan_rockefeller.pdf

Dressing rooms

See details on page 13.

All rooms situated backstage.

1 x large lounge

1 x medium size room with private toilet, sink, hot/cold water.

2 x small rooms.

1 x make up room/extra small room

3 x toilets with sink and 2 x shower in a separate hallway close to backstage.

All rooms covered by WiFi.

Other facilities available on request.

Production office Production office available on request.
WiFi and hardline ethernet connection available.

**Catering/kitchen/
dining area** One medium room with kitchen facilities available at the back of the venue.
At request.

Merchandise A modular semi-large area is available for merch sales.

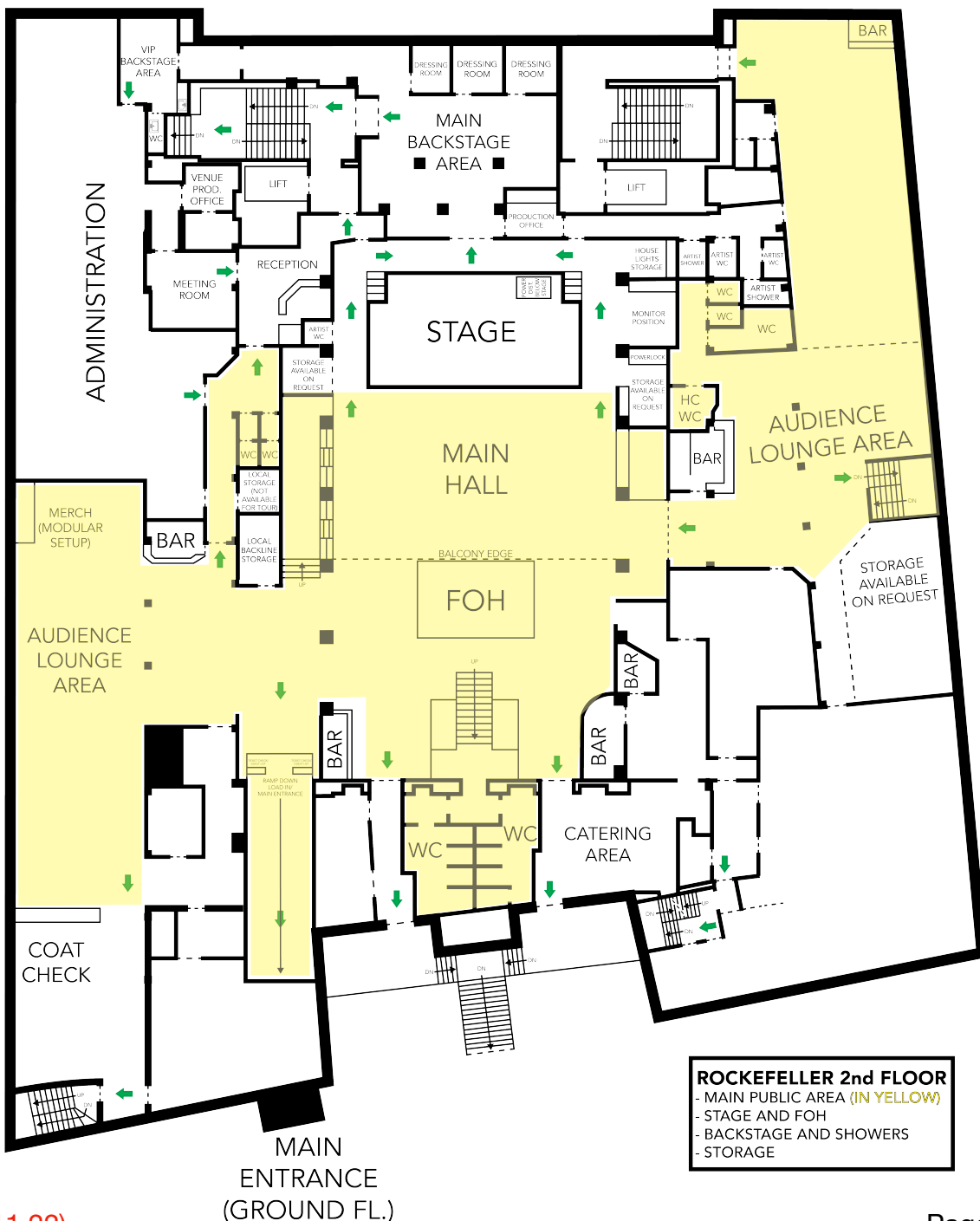
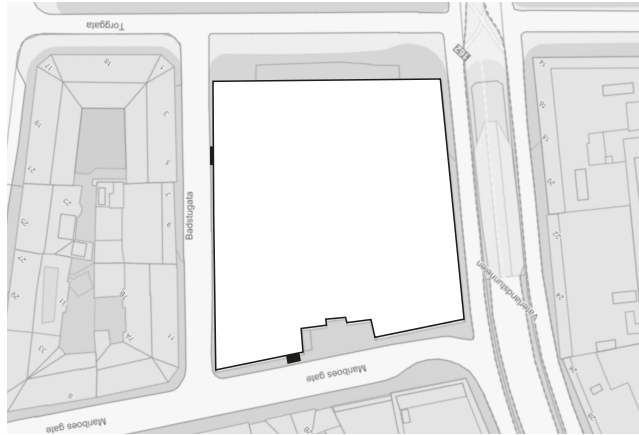
Distances	Sweden, Gothenburg	290 km.	3 hrs. 17 min. drive
	Sweden, Stockholm	525 km.	6 hrs. drive
	Danmark, Copenhagen	560 km.	6 hrs. 20 min. drive
	Norway, Stavanger	440 km.	6 hrs. 15 min. drive
	Norway, Bergen	460 km.	6 hrs. 30 min. drive
	Norway, Trondheim	490 km.	6 hrs. 40 min. drive

TECHNICAL SPECIFICATIONS

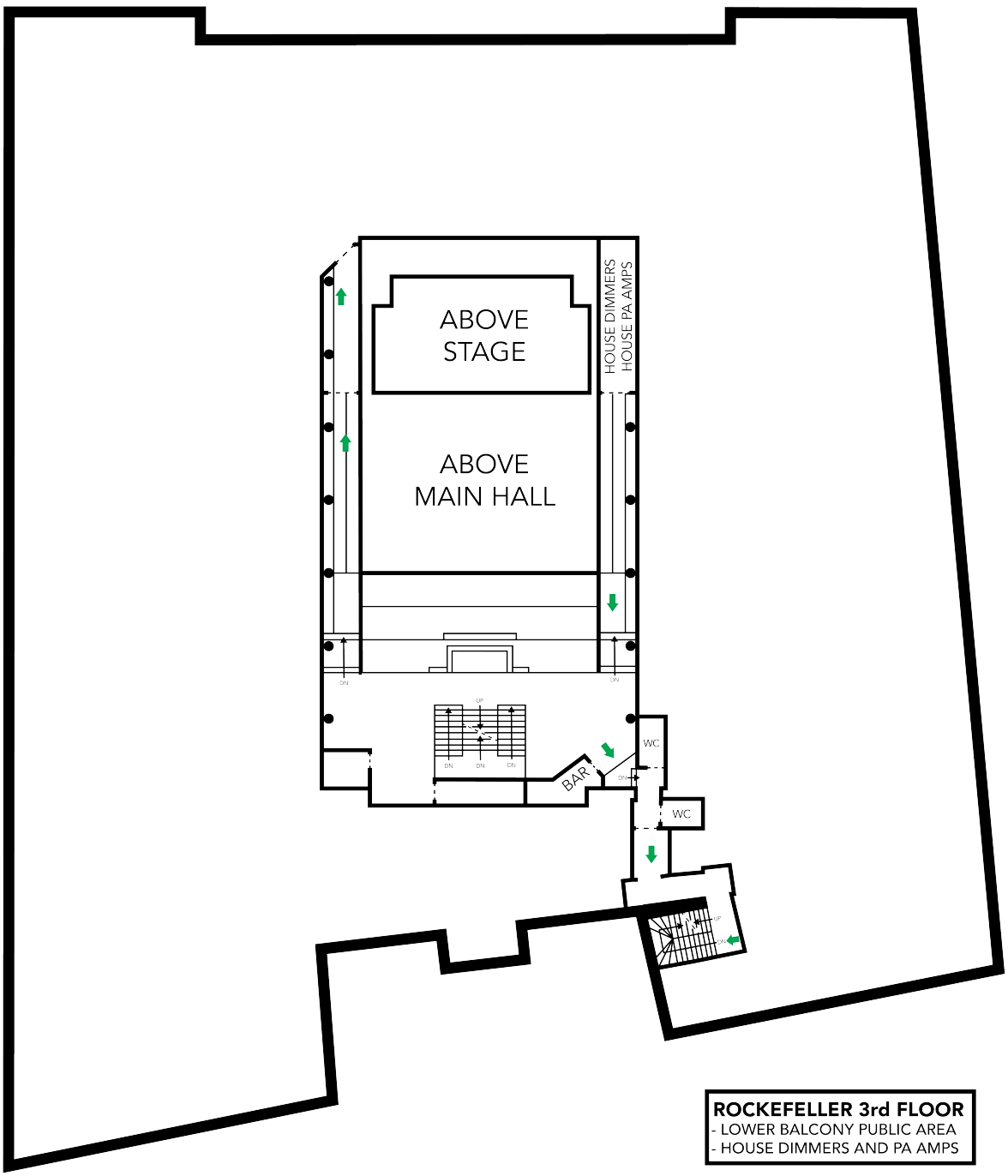
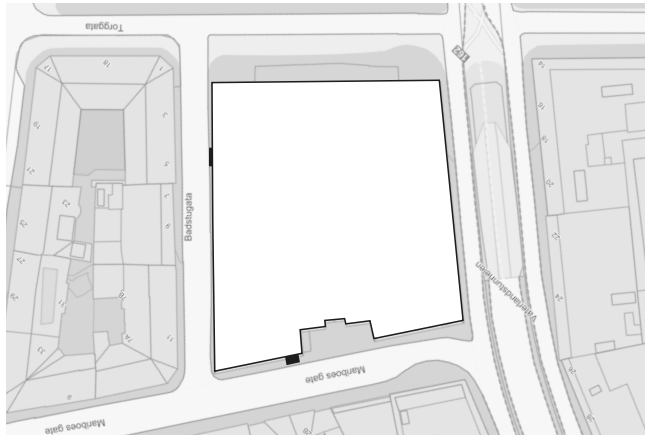
HOUSE SOUND/AUDIO SPECS: http://www.rockefeller.no/specs/sound_specs_rockefeller.pdf
HOUSE LIGHT SPECS: <http://www.rockefeller.no/specs/lightspecsrockefeller.pdf>
HOUSE LIGHT PLOT: <http://www.rockefeller.no/specs/lightplotrockefeller.pdf>
HOUSE RIGGING PLOT: <http://www.rockefeller.no/specs/riggplotrockefeller.pdf>
MA2 SHOWFILE WITH STD. PATCH: <http://www.rockefeller.no/specs/rockefellerstdpatch3d.show.gz>
HOUSE A/V SPECS: <http://www.rockefeller.no/specs/avspecksrockefeller.pdf>

**SMOKING INSIDE AND USING ANY TYPES OF NARCOTICS IS AGAINST NORWEGIAN LAW.
WE KINDLY THANK YOU FOR RESPECTING THESE LAWS WHEN VISITING OUR VENUE.**

4. STAGE LEVEL (2nd FLOOR) / STAGE, DRESSING ROOMS AND PROD. OFFICE

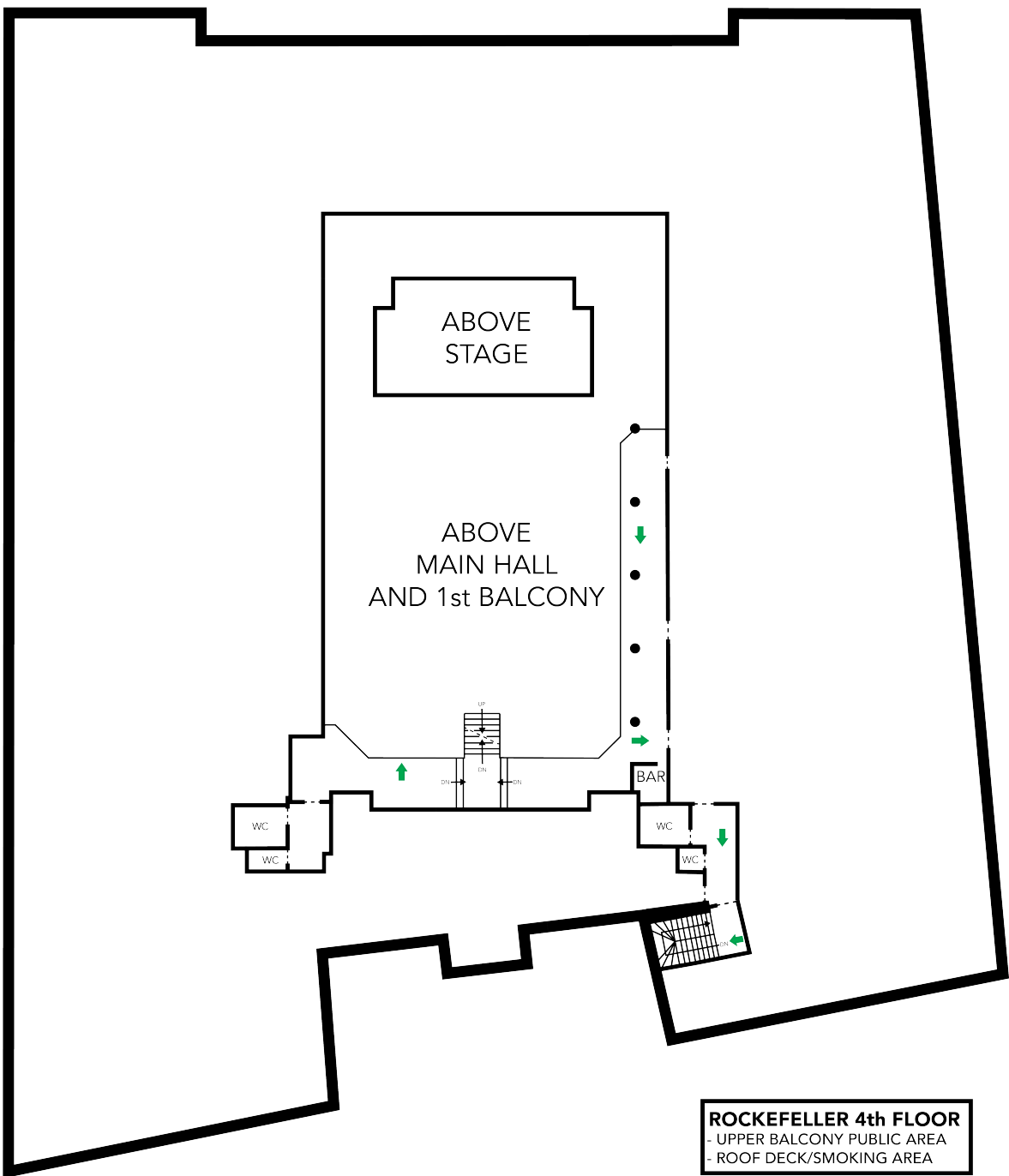
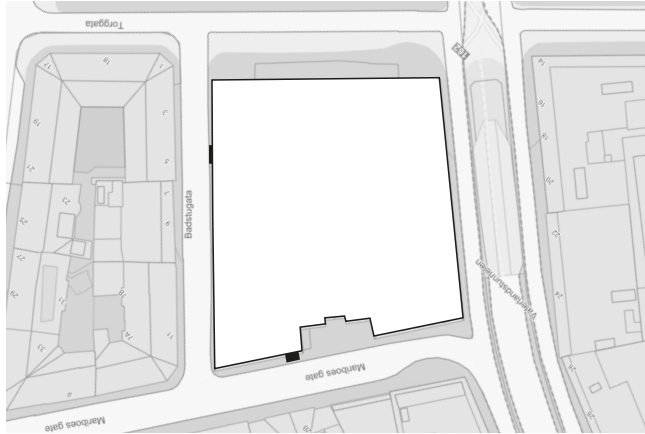


5. 1st BALCONY LEVEL (3rd FLOOR)

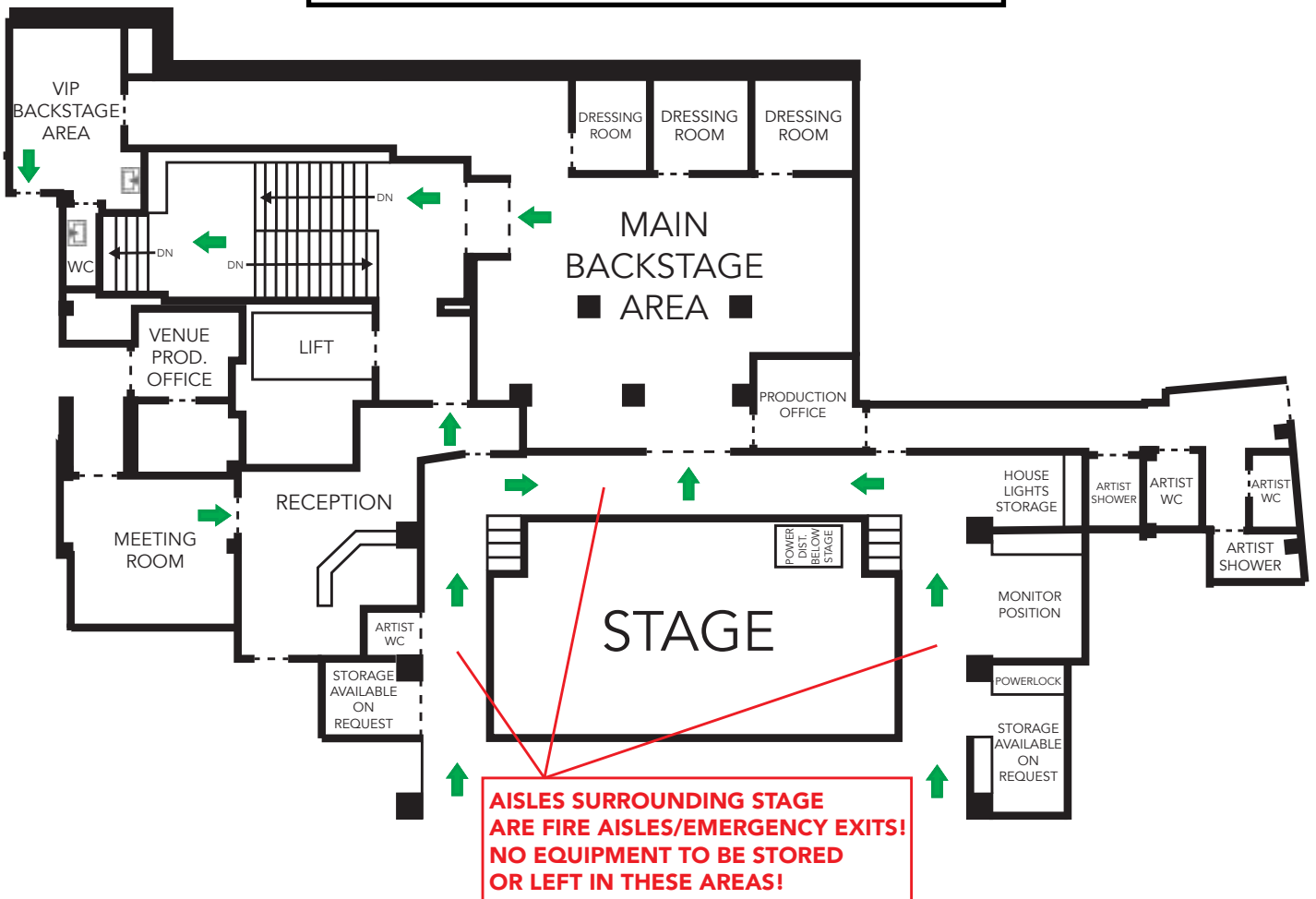
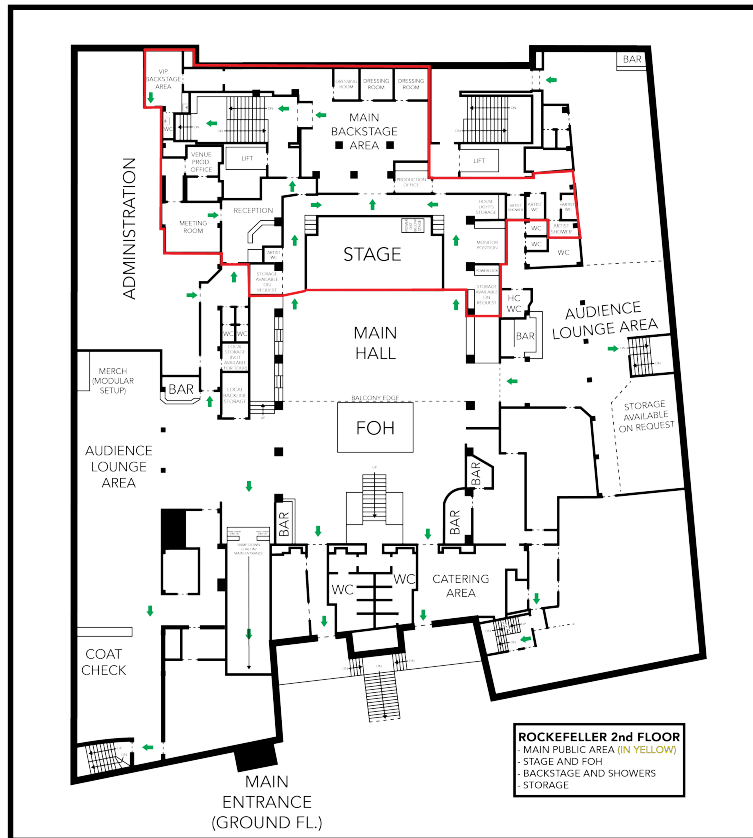


ROCKEFELLER 3rd FLOOR
- LOWER BALCONY PUBLIC AREA
- HOUSE DIMMERS AND PA AMPS

6. 2nd BALCONY LEVEL (4th FLOOR)



7. STAGE LEVEL (2nd FLOOR) / DRESSING ROOMS AND PROD. OFFICE



8. DRESSING ROOMS (2nd FLOOR)



VIP backstage area



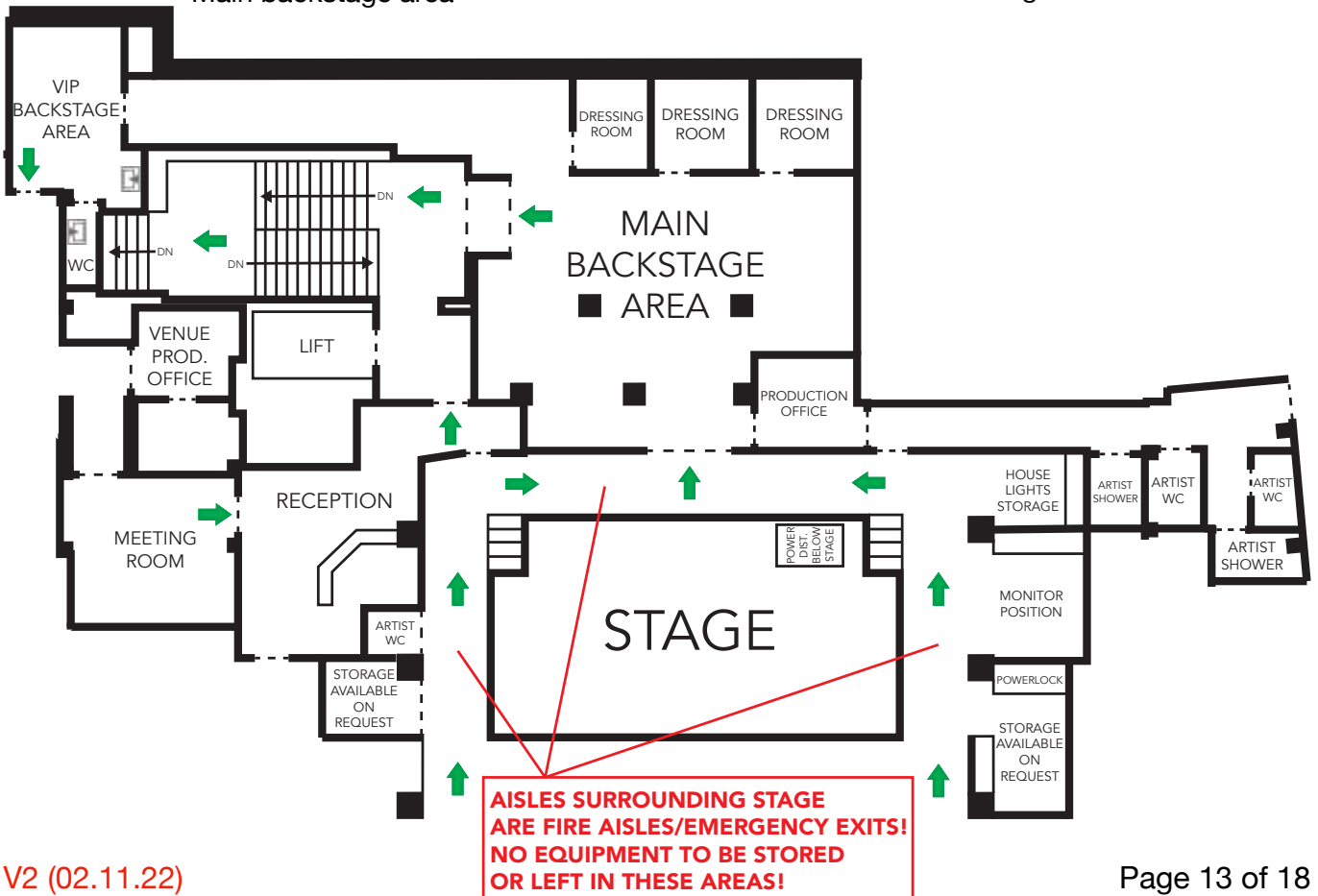
VIP backstage area



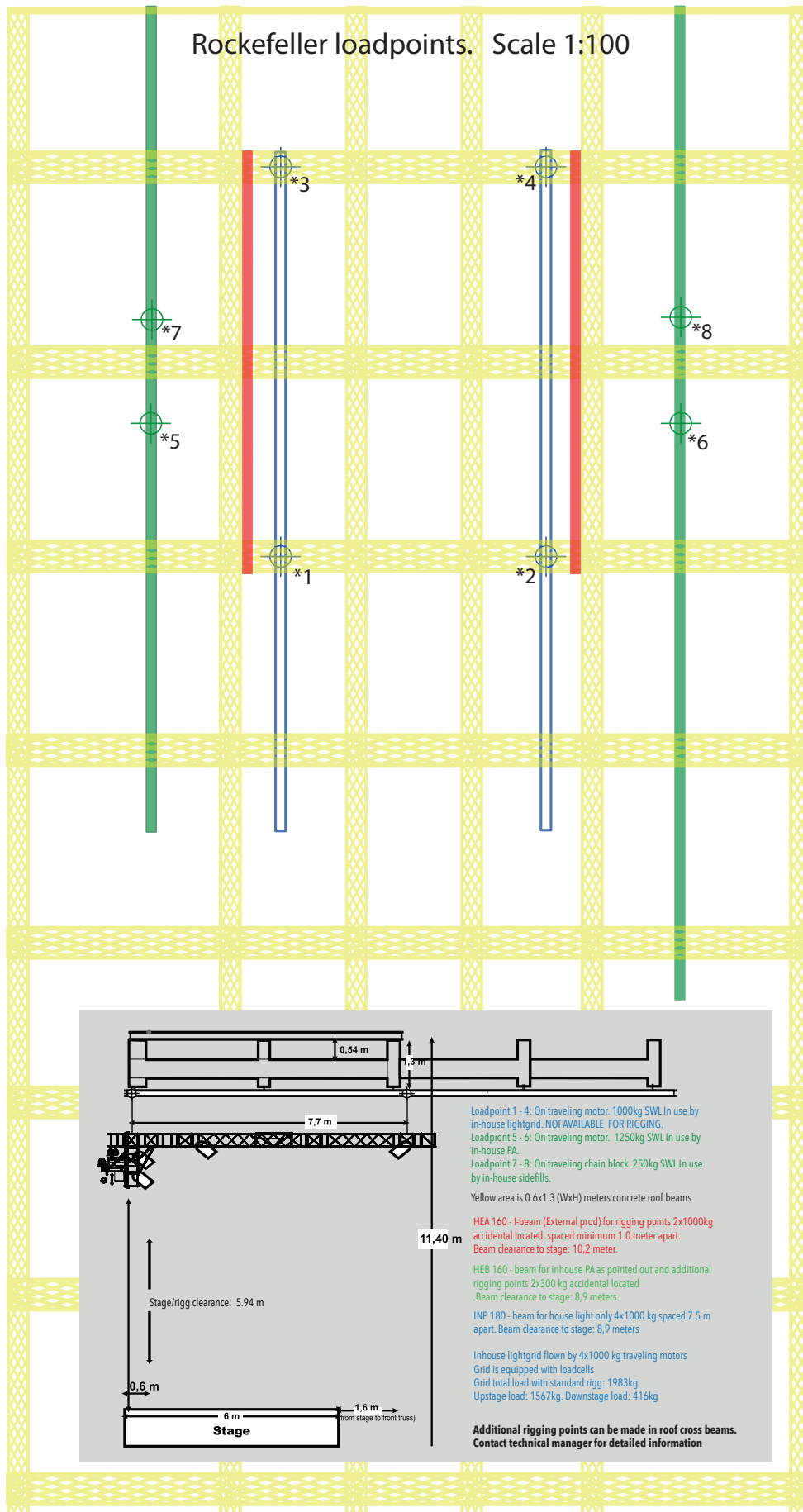
Main backstage area



Main backstage area



9. RIGGING



10. PICTURES STAGE LEVEL (2nd FLOOR) / DRESSING ROOMS AND PROD. OFFICE



VIP backstage area



VIP backstage area



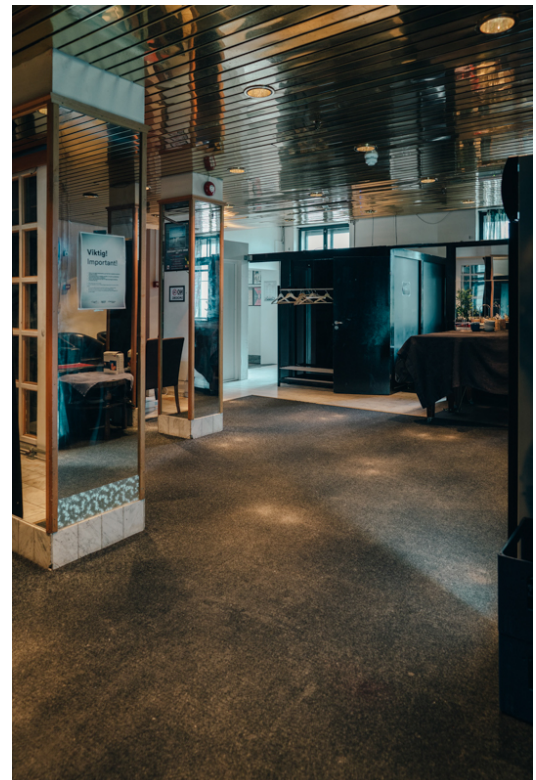
Main backstage area and prod. office



Main backstage area with extra dressing rooms



Hallway to VIP backstage area



Main backstage area with extra dressing rooms



Stage seen from main hall



Main hall seen from stage



Main hall and stage seen from balcony



Main hall and stage seen from balcony



Stage seen from behind



Stage seen from behind



Stage seen from monitor area

V2 (02.11.22)



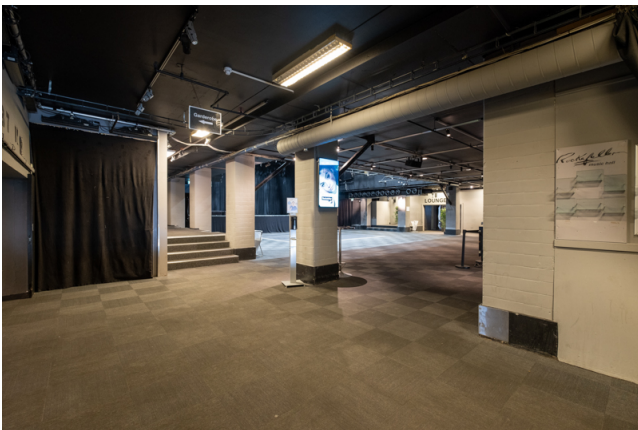
Monitor area seen from stage left



Main entrance seen from top of load in ramp



Load in ramp seen from main entrance



Main hall and stage seen from top of load in ramp



Merch sales area in lounge area



Coat check seen from merch sales area



Main entrance



Parking, spot 1 of 2



Artist toilets and showers



Artist showers



Artist showers

We appreciate all inputs to this venue information. Please send inputs to henrik@rockefeller.no as this is a document in constant progress.